

You Won't Want to Miss What is Happening on Kimble Lake!



## Kimble Shorelines

A Publication of Kimble Lake Homeowners Association August 2021 Edition

Cover photo "Night Fire Off The Point" entered by Joyce Hansen was the 2020 1st place photo.

## Annual Meetings

Please join your lake neighbors and friends at the annual meetings:

- Where: Ideal Township Community Center
- Day: Saturday September 4
- Time: KLID meeting starts at 8:00. KLHA meeting to start immediately after.

KLID meeting materials are available at this [link](#).

## Kimble Gear

The Brekke's plan to have samples available at the annual meeting and will be taking orders in the weeks following the meeting.

## Lake Water Level

The lack of rain has caused the water level to drop significantly from normal levels. All the lakes in our chain should have the same water levels so we can look to Ossie for how much we are down. Note: The data and information provided is before the 1.4 inches of recent rains.

Ossie Lake reports official water levels to the DNR several times a year. Their lake level is down about 13 inches from normal water levels but the level seems to have stabilized in the past couple weeks indicating inflows are offsetting outflows and evaporation. Below are a couple charts available on the DNR website at this [link](#) showing reported water levels the past 10 years.

WAPOA recently sent out information on the White Fish Chain water levels. Here is the information they provided.

The Pine River Dam at Crosslake has been discharging minimum flow to maintain levels in the river (33 cfs) for about two months now.

- Since May 1<sup>st</sup>, we have received 3.53 inches of precipitation.
- Normal precipitation for our area May 1<sup>st</sup> – August 31<sup>st</sup> is 15.36 inches.
- Basically, we would need about 12" of rain between now and the end of August to get our rainfall amounts back to average.
- Cross Lake is currently about 7.5 inches below our normal desirable summer elevation, prediction is another .5 in the next few weeks if we don't see rain.

I would recommend that people check with their boat lift companies to see what they recommend. I have heard several people starting to pull equipment in.

### Ossawinnamakee - 18035200 Crow Wing County

#### Water Level Data

Period of record: 10/14/1938 to 07/25/2021

# of readings: 1103

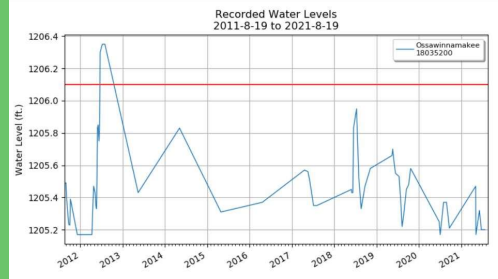
Highest recorded: 1206.85 ft (06/17/1944)

Lowest recorded: 1205.03 ft (08/22/2004)

Recorded range: 1.82 ft

Last reading: 1205.2 ft (07/25/2021)

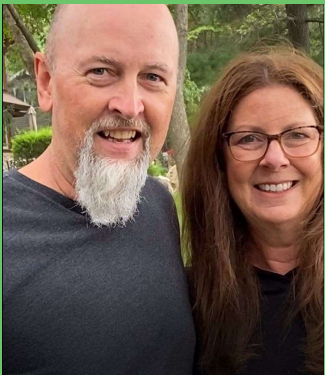
[Ordinary High Water Level \(OHW\)](#) elevation: 1206.1 ft



## Annual Fiesta

Thanks to the Knutsons and Rows for hosting the 11th annual fiesta. There was a good turnout with participants happy for the chance to catch up with their neighbors. Thank you Jean Larson for providing the pictures.





### Coffee at Lodicos

Approximately 25 lake residents enjoyed coffee, light refreshments and good conversation at the Lodicos last Saturday morning. Thanks for hosting Todd and Jan.

### 2021 Photo Contest Entries - Vote By Sept 2

Thanks to all who submitted entries in this year's photo contest. We have many creative and beautiful entries. Prizes awarded for 1st, 2nd and 3rd places. Please use the following process to submit your vote.

1. Must be a Kimble Lake family member to vote.
2. Email [Kimblephotocontest@gmail.com](mailto:Kimblephotocontest@gmail.com) with a maximum of 2 photo numbers. Use the photo numbers underneath each picture below.
3. Votes must be received no later than end of the day September 2.

Winners to be announced in a newsletter a few days after the annual meeting.



Photo 1  
"We shouldn't have dove!"

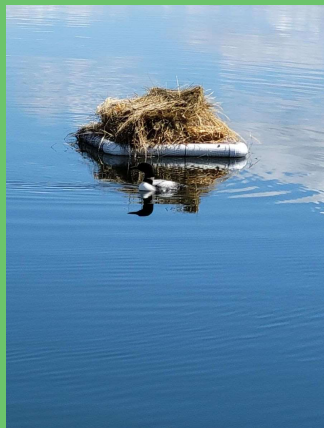


Photo 2  
"Anxious"



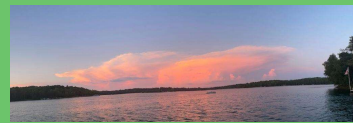
Photo 3  
"Time for a drink"



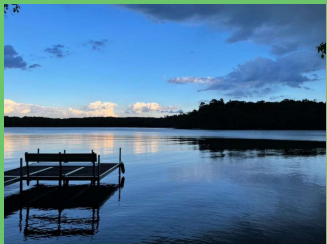
**Photo 4**  
**"From our dock"**



**Photo 5**  
**"Smoky sunset"**



**Photo 6**  
**"Sunset beauty on Kimble Lake"**



**Photo 7**  
**"The Calm before the Storm on Kimble Lake"**



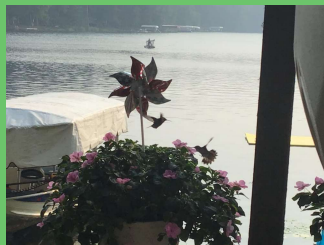
**Photo 8**  
**"Bulldogs and dragonflies"**



**Photo 9**  
**"Owls"**



**Photo 10**  
**"A beautiful sky. Preparing the celebration of the 4th of July"**



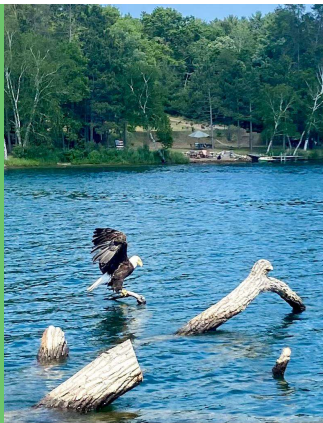
**Photo 11**  
**"Summer humming"**



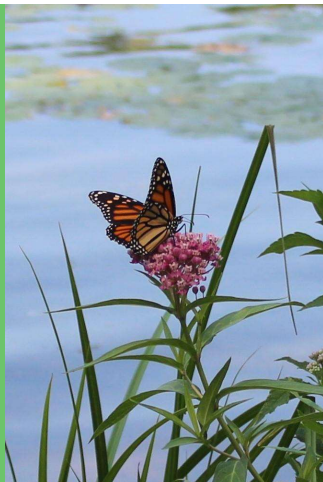
**Photo 12**  
**"Eagle scouting us out as we floated by on the south side of the lake"**



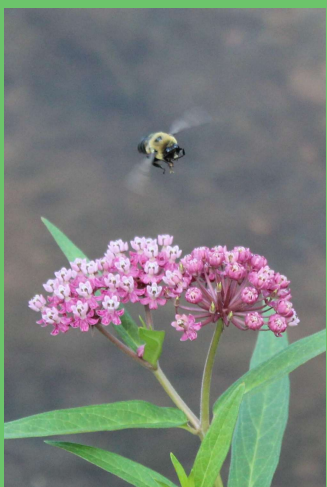
**Photo 13**  
**"Beautiful visitor"**



**Photo 14**  
**"View from dock"**



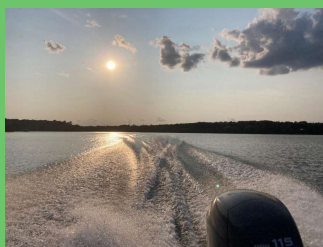
**Photo 15**  
**"Sipping Sweet Nectar"**



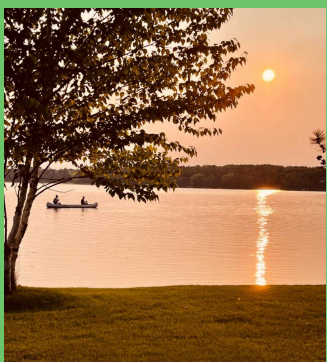
**Photo 16**  
**"Clear for Landing"**



**Photo 17**  
**"Coloring Kimble with orange"**



**Photo 18**  
**"Kruisin' on Kimble"**



**Photo 19**  
**"Peace and Solitude"**



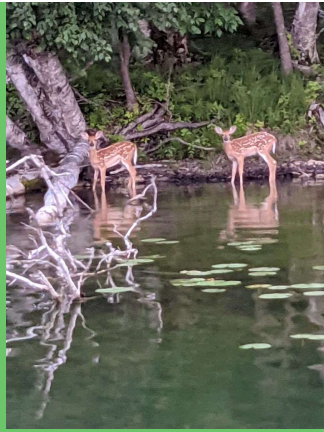
**Photo 20**  
**"Glorious sunset splash!"**



**Photo 21**  
**"Major Mushroom- a giant orange Chicken of the Woods mushroom from our Kimble Lake yard"**



**Photo 22**  
**"Daily visitors"**



**Photo 23**  
**"Kimble shoreline to the left  
of channel into  
Ossawinnamakee Lake"**



**Photo 24**  
**"Summer sunset"**

## **KLHA Mission**

The Kimble Lake Homeowners Association is organized to encourage wise use and preservation of Kimble Lake to maintain the ecological balance that must exist between the lake and adjacent shore land. The association will work to keep this lake and its surrounding watershed in good condition. Further, the association will consider, recommend and endeavor, through responsible means, to bring about appropriate action by agencies of government and private individuals to realize effective management and preservation of the valuable resources of Kimble Lake and its adjacent shore land.

For contact info, click [here](#).

### **Board of Directors**

Jim Rusch, President  
Dave Bliss, Vice President  
Jan Lodico, Treasurer  
Tom Mahoney, Secretary  
Dave Rysdam

### **Committee Chairs:**

**Fish:** Larry Knutson  
**Website:** Gary Schwartz  
**Instagram:** Kendall Baumgartner  
**Newsletter:** Dave Rysdam  
**Social:** Jean Larson, Kathy Mohr and  
Karen Rysdam  
**Water Quality:** Mike O'Neil  
**AIS:** Tom Mahoney  
**Sunshine:** Barb Rowe  
**Directory:** Jan Lodico

The Kimble Lake Homeowners Association was formed in 2002. Membership is voluntary and costs \$40 per year, due at the time of the annual meeting. Join today! Simply download the KLHA Membership form [here](#) and send payment to:

Kimble Lake Homeowners Association, PO Box 836, Pequot Lakes MN 56472

[Visit our Website](#)





Kimble Lake Homeowners Assoc. | Kimble Lake, Mailing Address - PO Box 836, Pequot Lakes,  
MN 56472

[Unsubscribe kimblelake@gmail.com](mailto:kimblelake@gmail.com)

[Update Profile](#) | [About Constant Contact](#)

Sent by kimblelake@gmail.com in collaboration with



Try email marketing for free today!